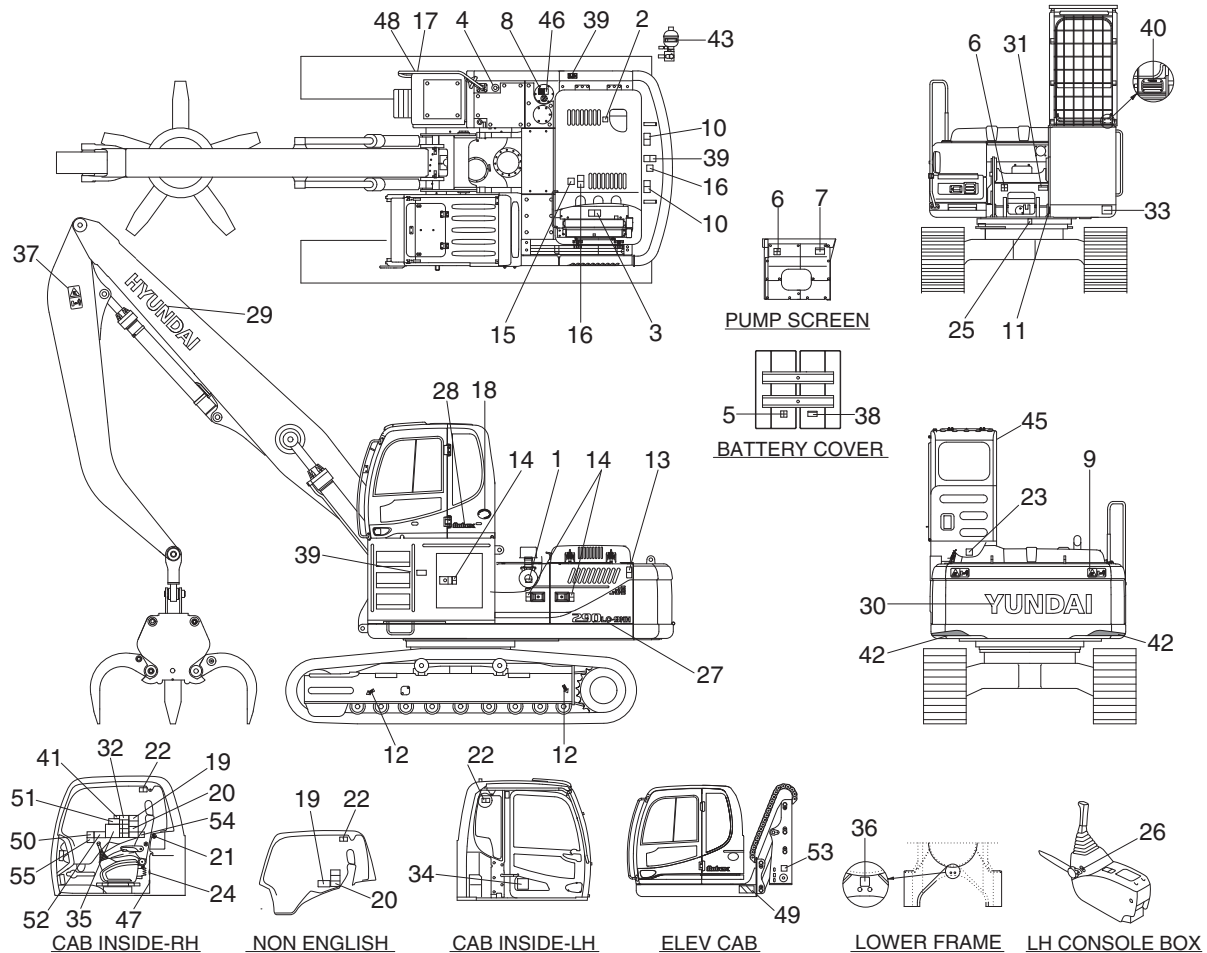


## SAFETY LABELS

### 1. LOCATION

Always keep these labels clean. If they are lost or damaged, attach them again or replace them with a new label.



- |                        |                                      |  |
|------------------------|--------------------------------------|--|
| 1 Air cleaner filter   | 20 Ref operator manual-Cab RH pillar | 40 FOPS FOG plate                          |
| 2 Turbocharger cover   | 21 Hammer                            | 41 Caution (water separator, turbocharger) |
| 3 Radiator cap         | 22 Safety front window               | 42 Reflecting                              |
| 4 Fueling              | 23 Safety rear window                | 43 Accumulator                             |
| 5 Battery accident     | 24 Air conditioner filter            | 45 Beacon lamp                             |
| 6 High pressure hose   | 25 Swing bearing grease              | 46 Fuel shut off                           |
| 7 Hydraulic oil level  | 26 Safety lever                      | 47 MCU/ECM connector                       |
| 8 Hydraulic oil lub    | 27 Model name                        | 48 Battery position                        |
| 9 Keep clear-rear      | 28 Logo (ROBEX)                      | 49 Reflecting                              |
| 10 Lifting eye         | 29 Trade mark (boom)                 | 50 Elevating cab                           |
| 11 Name plate          | 30 Trade mark (CWT)                  | 51 Elevating control                       |
| 12 Sliding ideogram    | 31 Reduction gear grease             | 52 Material handler control                |
| 13 Keep clear-side     | 33 Noise level LWA                   | 53 Hand caution                            |
| 14 Stay fix            | 34 Service instruction               | 54 Emission control information (USA only) |
| 15 Shearing            | 35 Lifting chart                     | 55 Emission control information (EU only)  |
| 16 No step             | 36 Tie                               |  |
| 17 Transporting        | 37 Keep clear-Boom/arm               |  |
| 18 Low emission engine | 38 Electric welding                  |  |
| 19 Control ideogram    | 39 Falling                           |  |

## 2. DESCRIPTION

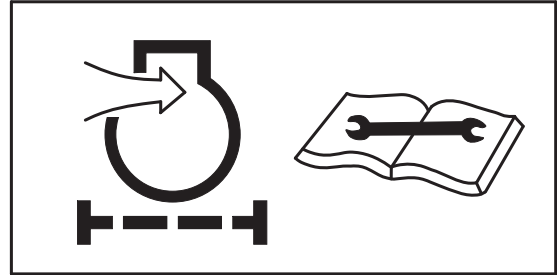
There are several specific warning labels on this machine please become familiarized with all warning labels.

Replace any safety label that is damaged, or missing.

### 1) AIR CLEANER FILTER (item 1)

This warning label is positioned on the air cleaner cover.

- ※ **Periodic and proper inspection, cleaning and change of elements prolong engine life time and maintain the good performance of engine.**



21070FW01

### 2) TURBOCHARGER COVER (item 2)

This warning label is positioned on the turbocharger cover.

- ▲ **Do not touch turbocharger or it may cause severe burn.**



21070FW02

### 3) RADIATOR CAP (item 3)

This warning label is positioned on the radiator.

- ▲ **Never open the filler cap while engine running or at high coolant temperature.**

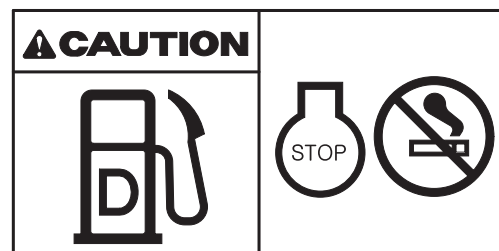


14070FW03

### 4) FUELING (item 4)

This warning label is positioned on the right side of fuel filler neck.

- ▲ **Stop the engine when refueling. All lights or flames shall be kept at a safe distance while refueling.**



21070FW04

#### 5) BATTERY ACCIDENT (item 5)

This warning label is positioned on the battery cover.

- ⚠ **Electrolyte containing sulfuric acid cause severe burns. Avoid being in contact with skin, eyes or clothes. In the event of accident flush with sufficient water, call a physician immediately.**
- ※ **Maintain the electrolyte at the recommended level. Add distilled water to the battery only when starting up, never when shutting down.**  
With electrolyte at proper level, less space may cause the gases to be accumulated in the battery.
- ⚠ **Extinguish all smoking materials and open flames before checking the battery.**
- ⚠ **Do not use matches, lighters or torches as a light source near the battery for the probable presence of explosive gas.**
- ⚠ **Do not allow unauthorized personnel to change the battery or to use booster cables.**
- ⚠ **For safety from electric shock, do not battery terminal with a wet hand.**



36070FW05

#### 6) HIGH PRESSURE HOSE (item 6)

This warning label is positioned on the screen plate.

- ⚠ **Escaping fluid under pressure can penetrate the skin causing serious injury.**
- ※ **Study the service manual before service job.**

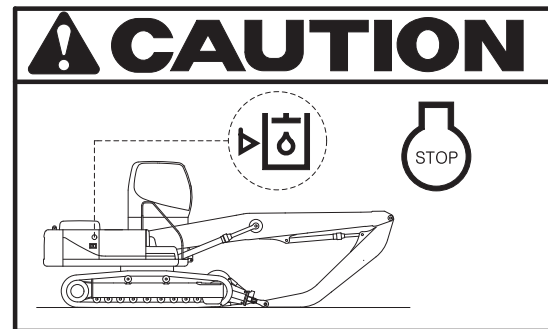


14070FW29

#### 7) HYDRAULIC OIL LEVEL (item 7)

This warning label is positioned on the screen plate.

- ▲ Place the bucket on the ground whenever servicing the hydraulic system.
- ※ Check oil level on the level gauge.
- ※ Refill the recommended hydraulic oil up to specified level if necessary.



4809MH0SL03

#### 8) HYDRAULIC OIL LUBRICATION (item 8)

This warning label is positioned on the top of the hydraulic tank.

- ※ Do not mix with different brand oils.
- ▲ Never open the filler cap while high temperature.
- ▲ Loosen the cap slowly and release internal pressure completely.

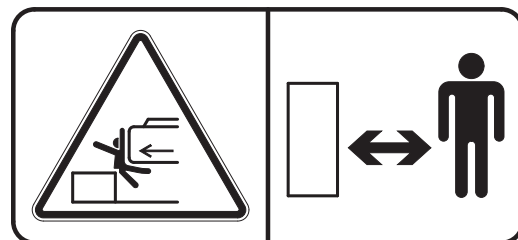


14070FW08

#### 9) KEEP CLEAR (item 9)

This warning label is positioned on the rear of counterweight.

- ▲ To prevent serious personal injury or death keep clear of machine swing radius.
- ▲ Do not deface or remove this label from the machine.

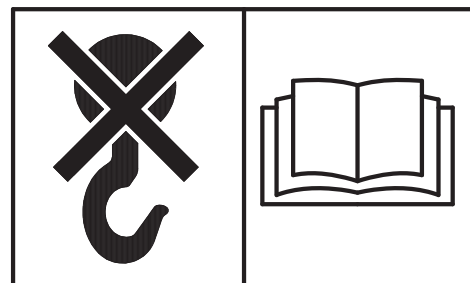


21090FW09

#### 10) LIFTING EYE (item 10)

This warning label is positioned on the counterweight.

- ▲ Do not lift the machine by using lifting eyes on the counterweight or the lifting eyes may be subject to overload causing its breaking and possible personal injury.
- ※ See page 5-7 for proper lifting method of the machine.



21070FW10

### 11) SIDE KEEP CLEAR (item 13)

This warning label is positioned on the side of LH rear side cover.

- ⚠ **To prevent serious personal injury or death keep clear of machine swing radius.**
- ⚠ **Do not deface or remove this label from the machine.**



21070FW13

### 12) STAY FIX (item 14)

This warning label is positioned on the side cover.

- ⚠ **Be sure to support the stay when the door needs to be opened.**
- ⚠ **Be careful that the opened door may be closed by the external or natural force like strong wind.**

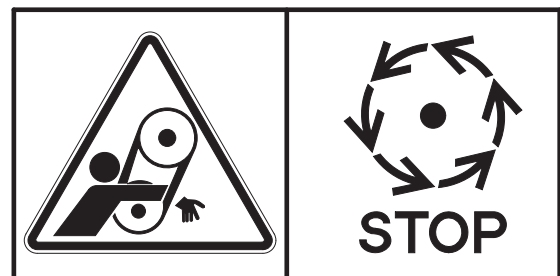


21070FW14

### 13) SHEARING (item 15)

This warning label is positioned on the engine hood.

- ⚠ **Don't open the engine hood during the engine's running.**
- ⚠ **Don't touch exhaust pipe or it may cause severe burn.**



21070FW15

**14) NO STEP (item 16)**

This warning label is positioned on the engine hood.

- △ **Don't step on the engine hood.**

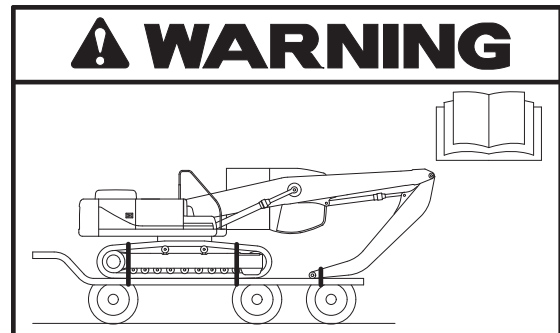


21070FW16

**15) TRANSPORTING (item 17)**

This warning label is positioned right side of upper frame.

- ▲ **Study the operator's manual before transporting the machine, if provided and tie down arm and track to the carrier with lashing wire.**  
See page 5-6 for details.

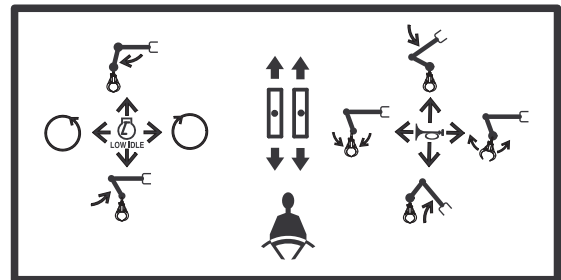


4809MH0SL02

**16) CONTROL IDEOGRAM (item 19)**

This warning label is positioned in right window of the cab.

- ▲ **Check the machine control pattern for conformance to pattern on this label. If not, change label to match pattern before operating machine.**  
▲ **Failure to do so could result in injury or death.**  
See page 4-11 for details.



2909MH0SL10

**17) REFER TO OPERATOR'S MANUAL (item 20)**

This warning label is positioned on the right side window of the cab.

**(1) Operator's manual**

- ▲ Study the operator's manual before starting and operating machine.

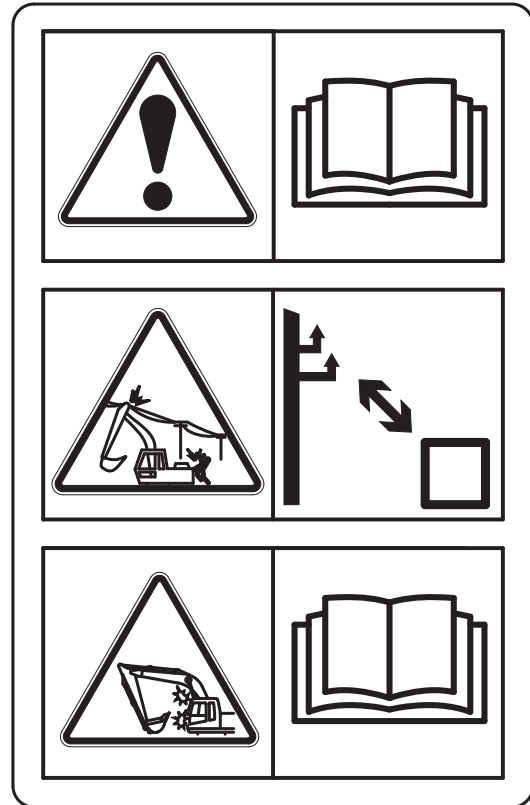
**(2) Max height**

- ▲ Serious injury or death can result from contact with electric lines.

An electric shock being received by merely coming into the vicinity of an electric lines, the minimum distance should be kept considering the supply voltage as page 1-7.

**(3) Interference**

- ▲ Be careful to operate machine equipped with quick clamp or extensions.
- ▲ Bucket may hit cab or boom, boom cylinders when it reached vicinity of them.

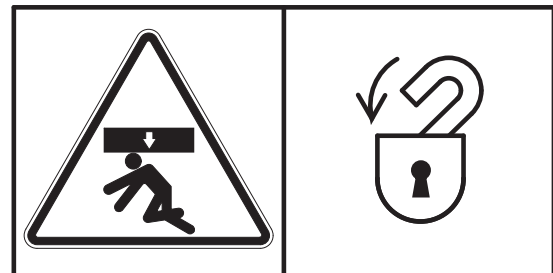


2609A0SL05

**18) SAFETY FRONT WINDOW (item 22)**

This warning label is positioned on the both side window of the cab.

- ▲ Be careful that the front window may be promptly closed.



21070FW24

**19) SAFETY REAR WINDOW (item 23)**

This warning label is positioned on the inside of rear window.

- ※ The rear window serves us an alternate exit.
- ※ To remove rear window, pull the ring and push out the glass.

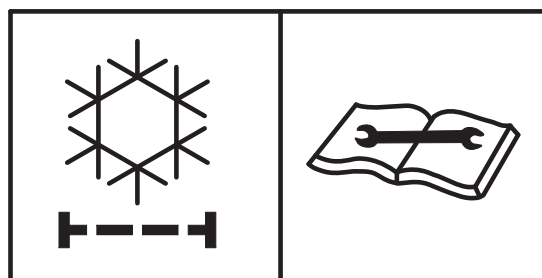


2609A0SL02

## 20) AIR CONDITIONER FILTER (item 24)

This warning label is positioned on the air conditioner cover.

- ※ **Periodic and proper inspection, cleaning and change of filter prolong air conditioner life time and maintain good performance.**

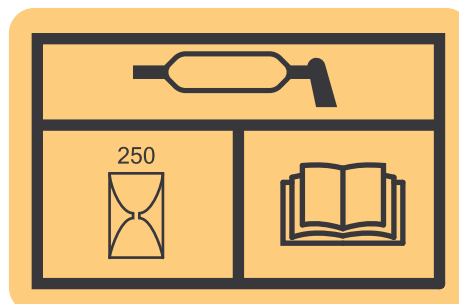


21070FW26

## 21) SWING BEARING GREASE (item 25)

This warning label is positioned in the front of swing ring gear.

- ※ **See page 6-34 for details.**

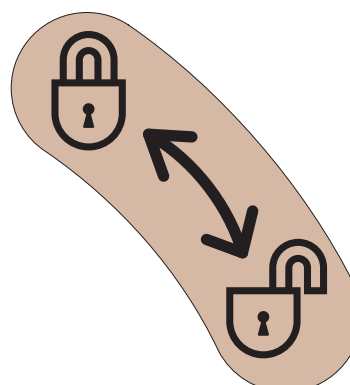


38090FW04

## 22) SAFETY LEVER (item 26)

This warning label is positioned on the cover of the safety lever.

- ⚠ **Before you get off the machine be sure to place the safety lever LOCKED position.**

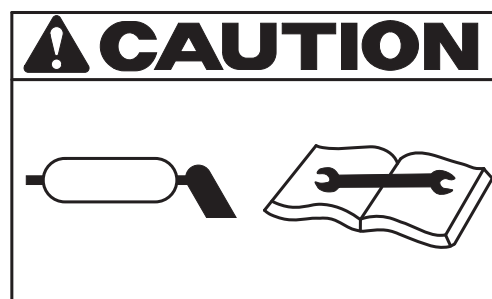


30007A1FW07A

## 23) REDUCTION GEAR GREASE (item 31)

This warning label is positioned in the front of upper frame.

- ⚠ **Grease is under high pressure.**  
**Grease coming out of the grease plug under pressure can penetrate the body causing injury or death.**



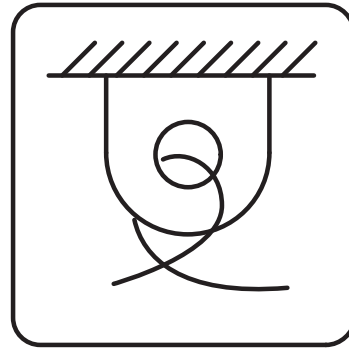
21070FW35



**24) TIE (item 36)**

This warning label is positioned on the lower frame.

- ⚠ **Never tow the machine using tie hole, because this may break.**
- ⚠ **See page 4-16 for detail.**



4507A0FW02

**25) KEEP CLEAR-BOOM/ARM (item 37)**

This warning label is positioned on both side of the arm.

- ⚠ **Serious injury or death can result from falling of the attachment.**
- ⚠ **To prevent serious injury or death, keep clear the underneath of attachment.**

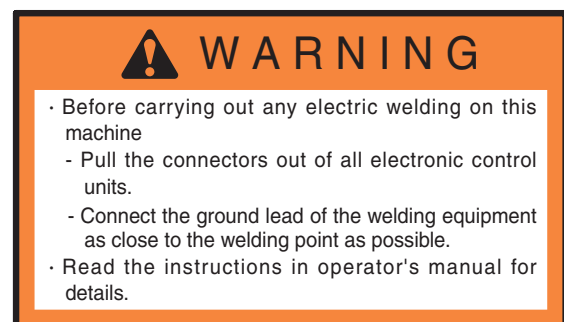


14070FW31

**26) ELECTRIC WELDING (item 38)**

This warning label is positioned on the battery cover.

- ⚠ **Before carrying out any electric welding on this machine, follow the below procedure.**
  - Pull the connector out of all electric control units.
  - Connect the ground lead of the welding equipment as close to the welding point as possible.
- ※ **See page 6-42 for detail.**



7807AFW20

## 27) FALLING (item 39)

This warning label is positioned on the top of the hydraulic tank.

- ⚠ Falling is one of the major cause of personal injury.
- ⚠ Be careful of slippery conditions on the platforms, steps and handrails when standing on the machine.

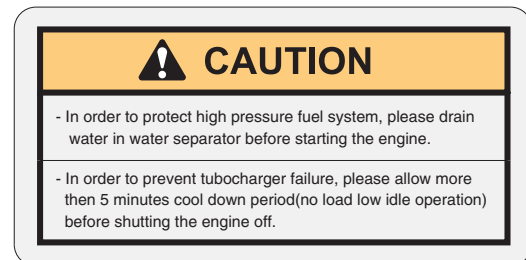


14070FW30

## 28) CAUTION (W/SEPARATOR, TURBOCHARGER, item 41)

This warning label is positioned on the right window of the cab.

- ⚠ In order to protect high pressure fuel system, please drain water in water separator before starting the engine.
- ⚠ In order to prevent turbocharger failure, please allow more than 5 minutes' cool down period (no load low idle operation) before shutting the engine off.

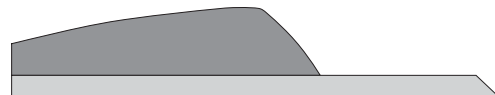


120090SL02

## 29) REFLECTING (item 42)

This warning label is positioned on the rear of counterweight.

- ⚠ To prevent serious personal injury or death keep clear of machine swing radius.
- ⚠ Do not deface or remove this label from the machine.



21090FW70

### 30) ACCUMULATOR (item 43)

This warning label is positioned on the accumulator of the solenoid valve.

- ※ The accumulator is filled with high-pressure nitrogen gas, and it is extremely dangerous if it is handled in the wrong way. Always observe the following precautions.

⚠ Never make any hole in the accumulator expose it to flame or fire.

⚠ Do not weld anything to the accumulator.

- ※ When carrying out disassembly or maintenance of the accumulator, or when disposing of the accumulator, it is necessary to release the gas from the accumulator. A special air bleed valve is necessary for this operation, so please contact your Hyundai distributor.



1107A0FW46

### 31) BEACON LAMP (item 45)

This warning label is positioned on the right outside of the cabin.

- ※ Make sure the beacon lamp maintains a vertical position.

A horizontal position can result in a decrease in life time of the lamp due to the infiltration of foreign substances such as dust or water.

- ※ While the machine transfer, the beacon lamp is easy to break. In that case, change the position of the lamp to the horizontal.

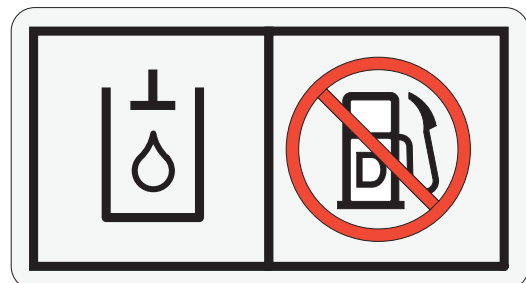


140Z90FW49

### 32) FUEL SHUT OFF (item 46)

This warning label is positioned on the left side of the hydraulic tank.

- ※ Fill only the hydraulic oil.
- ※ Do not fill the diesel fuel.



140WH90FW51

**33) MCU/ECM CONNECTOR (item 47)**

This warning label is positioned on the low cover of the air conditioner in the cab.

- ※ **MCU communicates the machine data with Laptop computer through RS232 service socket.**
- ※ **ECM communicates the engine data with cummins INSITE tool adapter through J1939 service socket.**
- ※ **See page 3-53 for details.**

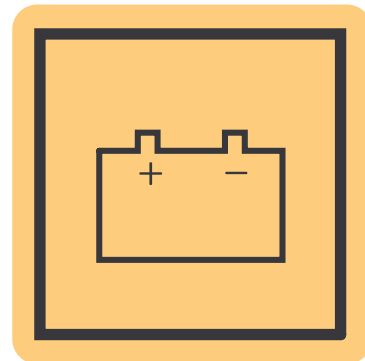


235Z90FW52

**34) BATTERY POSITION (item 48)**

This warning label is positioned in the left side cover.

- ⚠ **Battery gas can explode. Keep sparks and flames away from the batteries.**
- ※ **See page 6-40 for the battery handling.**

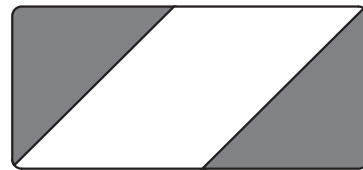


38090FW03

**35) REFLECTING (ELEVATING CAB, item 49, OPT)**

This warning label is positioned on the outside of elevating cab frame.

- ⚠ **Do not deface or remove this label from the machine.**

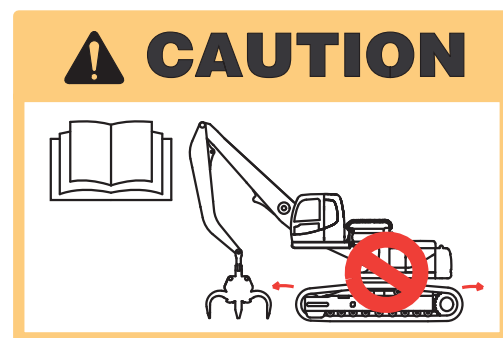


2909MH0SL02

**36) ELEVATING CAB (item 50, OPT)**

This warning label is positioned on the right window of the cab.

- ※ **See page 4-12 for details.**



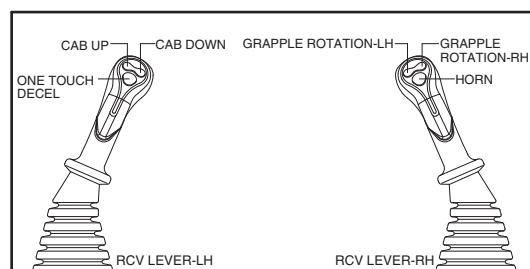
2909MH0SL05

### 37) ELEVATING CONTROL (item 51, OPT)

This warning label is positioned on the right window of the cab.

▲ Failure to do so could result in injury or death.

※ See page 4-11 for details.



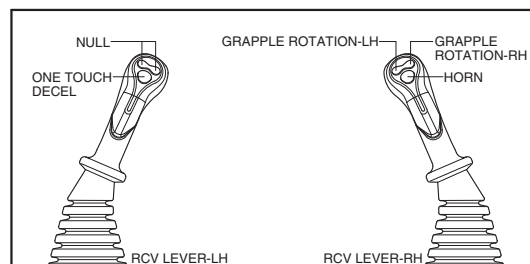
2909MH0SL06

### 38) MATERIAL HANDLER CONTROL (item 52)

This warning label is positioned on the right window of the cab.

▲ Failure to do so could result in injury or death.

※ See page 4-11 for details.



2909MH0SL03

### 39) HAND CAUTION (item 53, OPT)

This warning label is positioned on the side of elevating support.

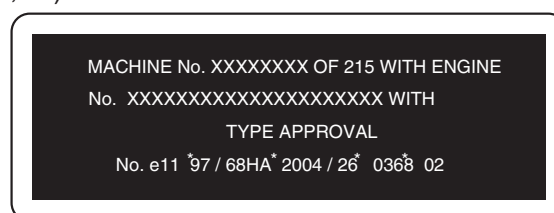


2909MH0SL07

### 40) EMISSION CONTROL INFORMATION (item 54, 55)

· EU only

This warning label is positioned on the right window of the cab.



2909MH0SL08

· USA only

This warning label is positioned on the right window of the cab.

※ This equipment has an engine that meets U.S.EPA emission standards under 40 CFR 1039.625 and California emission standards under 13 CCR 2423 (d).



2909MH0SL09